

MIMOSA9

Main features:

Pixels: Self Bias / Standard (3T)

Pitch: 20/30/40 μm

Diode size: (3.4x4.3 - 6x6 μm^2)

Epi-layer: With ($\sim 20\mu\text{m}$) and without

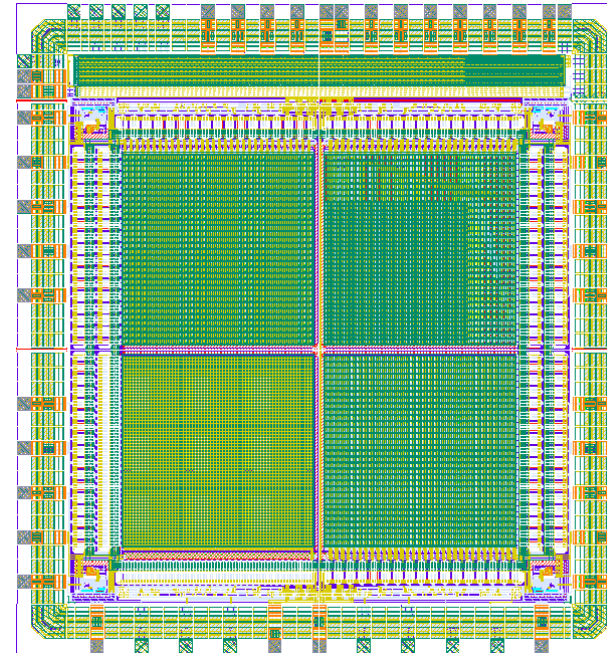
Mission:

Explore process. Study

- Detection performance
- Leakage current
- ...

Status:

First beam test results available



1.2 mm 0.96 mm

3T, 40 μm
32 x 32

SB, 20 μm
64 x 64

SB, 30 μm
32 x 32

SB, 40 μm
32 x 32

