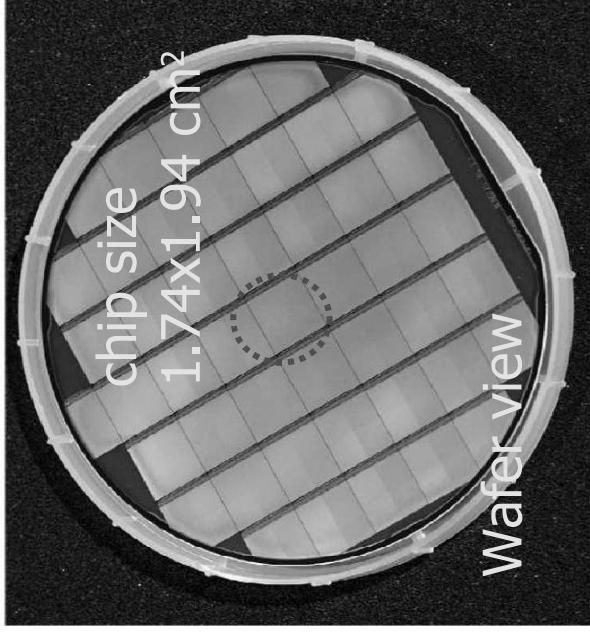
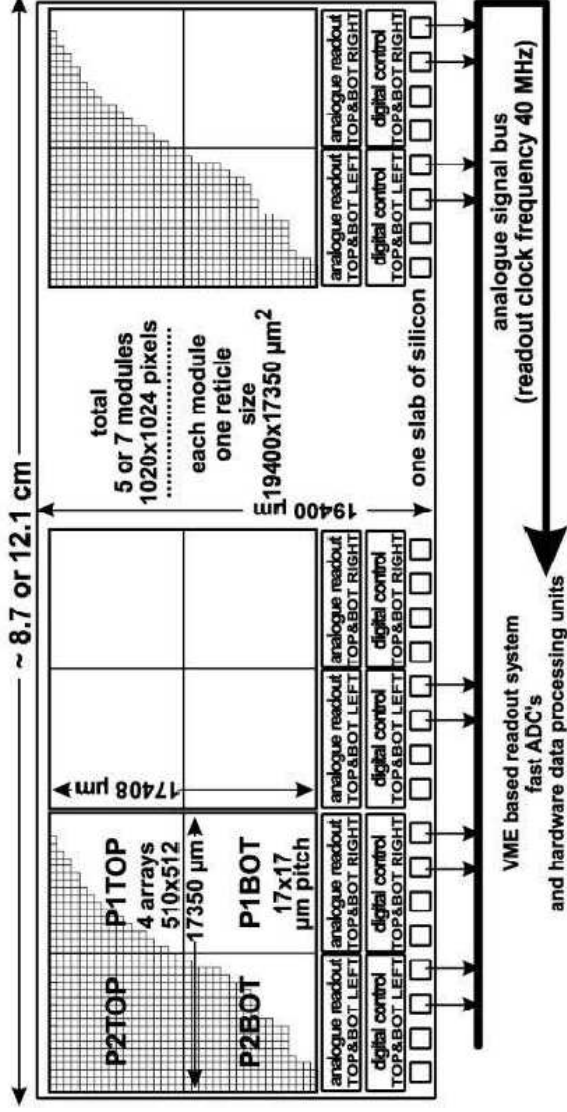


MIMOSA V: real-size prototype



- Real-size prototype: 3.5 cm^2 , 1M pixels
- First ladder concept attempt
- AMS 0.6 μm CMOS with 14 μm epilayer
- pixel pitch 17x17 μm^2
- 4 independent matrices of 512x512 pixels
- serial analogue readout @ 10 MHz
- back-thinned down to 120 μm

